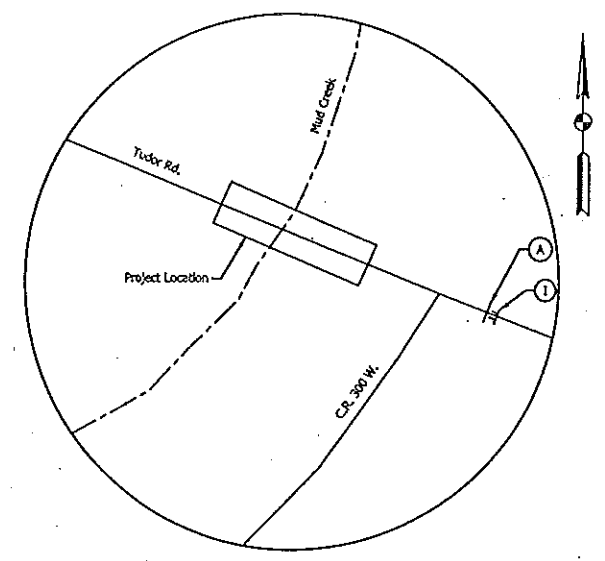
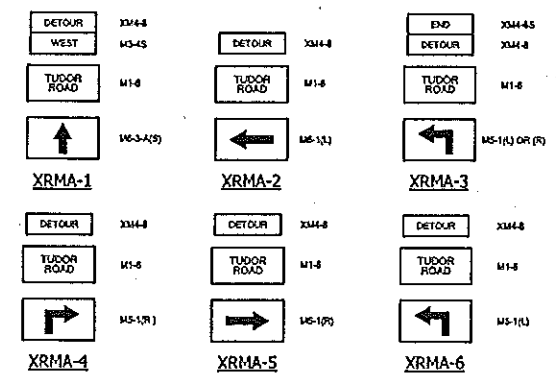


**DETOUR PLAN**  
Scale: 1" = 800'



**DETAIL "A"**  
Scale: 1" = 40'

**DETOUR ROUTE MARKER ASSEMBLY LEGEND**



**LEGEND**

- (A) TYPE III-A BARRICADES - 24 LFT REQUIRED
- (B) "ROAD CLOSED AHEAD" - XW20-3
- (C) "DETOUR AHEAD" - XW20-2
- (D) "ROAD CLOSED 500 FT." - XW20-3
- (E) "ROAD CLOSED 1000 FT." - XW20-3
- (F) ROAD CLOSURE SIGN ASSEMBLY WITH "ROAD CLOSED X MILES AHEAD LOCAL TRAFFIC ONLY" - R11-3
- (H) TYPE III-B BARRICADES STAGGERED - 24 LFT REQUIRED
- (I) ROAD CLOSURE SIGN ASSEMBLY WITH "ROAD CLOSED" - R11-2
- TT SIGN ASSEMBLY
- DETOUR ROUTE

**ESTIMATED QUANTITIES**

| DESCRIPTION                  | UNIT | TOTAL |
|------------------------------|------|-------|
| CONSTRUCTION SIGN, A         | EACH | 10    |
| DETOUR ROUTE MARKER ASSEMBLY | EACH | 11    |
| ROAD CLOSURE SIGN ASSEMBLY   | EACH | 6     |
| TYPE III-A BARRICADES        | LFT  | 72    |
| TYPE III-B BARRICADES        | LFT  | 72    |

**TWO ROAD CLOSURE NOTICE SIGNS XG20-5 REQUIRED (ONE AT EACH END) PLACED AT SITE A MINIMUM OF 10 DAYS PRIOR TO ROAD CLOSURE**

NOTES:  
DETOUR ROUTE MARKER ASSEMBLIES SHALL BE IN ACCORDANCE WITH STANDARD DRAWING 601-TCDT-03.  
TYPE B CONSTRUCTION WARNING LIGHTS SHALL BE USED WITH ALL SIGNS LOCATED ON BARRICADES.  
TYPE A CONSTRUCTION WARNING LIGHTS SHALL BE USED ON ALL OTHER CONSTRUCTION SIGNS.

|                          |                 |      |
|--------------------------|-----------------|------|
| RECOMMENDED FOR APPROVAL | DESIGN ENGINEER | DATE |
| DESIGNED: KCH            | DRAWN: PFC      |      |
| CHECKED: KAS             | CHECKED: KAS    |      |

INDIANA  
DEPARTMENT OF TRANSPORTATION

**DETOUR ROUTE**

|                  |               |
|------------------|---------------|
| HORIZONTAL SCALE | BRIDGE FILE   |
| AS NOTED         | HENDRICKS 135 |
| VERTICAL SCALE   | DESIGNATION   |
| N/A              |               |
| SURVEY BOOK      | SHEETS        |
| ELECTRONIC       | 3 of 19       |
| CONTRACT         | PROJECT       |

Model: Detour Sheet  
3/29/2017 10:50:05 AM  
User: BThurman  
H:\Projects\2016\Engineering\166013 Hendricks 135\Drawings\Sheets\PL166013 BR135 Detour.dgn