

The Hendricks County Surveyor's Office is looking to get quotes for a project in the Woodcreek Crossing Subdivision. I have included multiple aerals and below a scope of work.

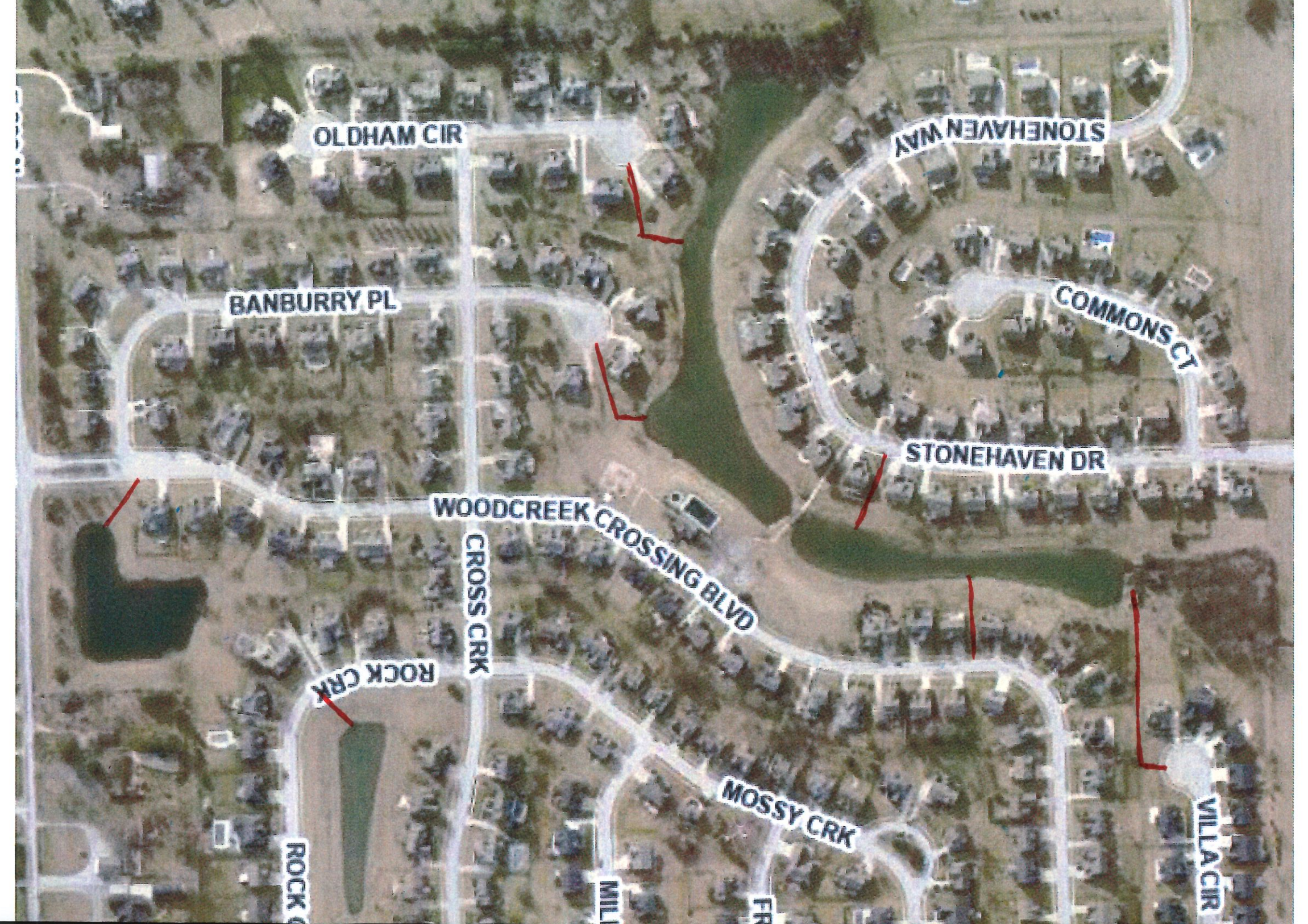
Contractor will have a map showing what easements they can use for access. Anywhere that the contractor will cross a sidewalk, a steel plate must be put down.

1. The southern most Pond in section 1, (Aerial 1)
  - Reset 3 RCP end sections
  - Cut flush with the ground and remove small willows to be hauled away. Stumps to not need to be dug out. Treat any stumps to prevent re growth.
  - Place Geo-textile fabric and rip rap around 5 end sections.
  - Repair any damaged areas with grass seed and straw mat.
2. Section 4 Pond, (Aerial 2)
  - Reset 1 RCP end section
  - Remove spoils from outlet to edge of pond. Level out spoils and finish grade over.
  - Place Geo-textile fabric and rip rap around 3 end sections.
  - Repair any damaged areas with grass seed and straw mat.
3. Pond 3, the northernmost pond in section 1 (Aerial 3)
  - Reset 1 RCP end section
  - Remove 1 willow tree, dig out stump and haul away.
  - Cut down and remove maple tree to be hauled away, grind the stump below the ground surface. Remove overgrowth around same outlet to be hauled away.
  - Place Geo-textile fabric and rip rap around 4 end sections.
  - Repair any damaged areas with grass seed and straw mat.
4. Pond 4, that is between section 1 and 6 (Aerial 4)
  - Remove overgrowth around 1 end section to be hauled away.
  - Place Geo-textile fabric and rip rap around 3 end sections.
  - Repair sinkhole at manhole in section 10. Dig around manhole and grout any needed area at the RCP connection.
  - Repair any damaged areas with grass seed and straw mat.
5. Once the job is completed finish grade ALL the disturbed work areas with grass seed and straw.

The cost of all stone and materials **should** be included in the quote. I will be doing a walkthrough on 7/1/25. at 9am. Please let me know if you will be attending. I Would like to have quotes returned to me by 4pm on 7/7/2025 to be opened at 7/8/2025 Drainage Board. This project will have a 30-day completion date from the time the approved quote is awarded and as weather permits. We will meet at 2053 Woodcreek Crossing Blvd Avon. Please let me know if you have any questions.

Blake Stephenson  
Drainage Inspector  
Hendricks County Surveyor's Office  
Office 317-718-6101  
Cell 317-766-4273  
bstephenson@co.hendricks.in.us





OLDHAM CIR

STONEHAVEN WAY

BANBURY PL

COMMONS CT

STONEHAVEN DR

WOODCREEK CROSSING BLVD

CROSS CRK

ROCK CRK

MOSSY CRK

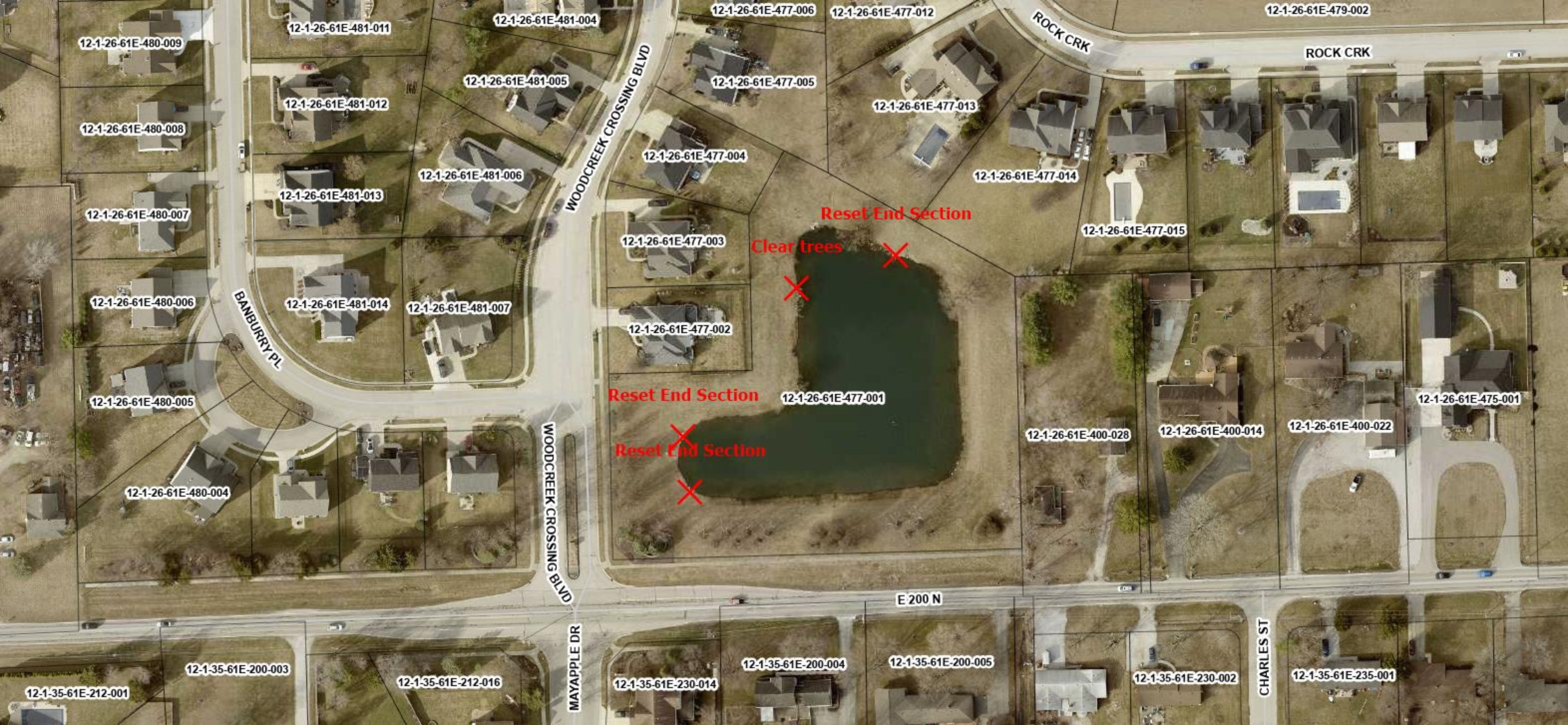
VILLACIR

ROCK CRK

MILL

FR





12-1-26-61E-480-009

12-1-26-61E-481-011

12-1-26-61E-481-004

12-1-26-61E-477-006

12-1-26-61E-477-012

12-1-26-61E-479-002

12-1-26-61E-480-008

12-1-26-61E-481-012

12-1-26-61E-481-005

12-1-26-61E-477-005

12-1-26-61E-477-013

12-1-26-61E-480-007

12-1-26-61E-481-013

12-1-26-61E-481-006

12-1-26-61E-477-004

12-1-26-61E-477-014

12-1-26-61E-477-015

12-1-26-61E-480-006

12-1-26-61E-481-014

12-1-26-61E-481-007

12-1-26-61E-477-003

Clear trees

Reset End Section

12-1-26-61E-480-005

12-1-26-61E-477-002

12-1-26-61E-477-001

Reset End Section

Reset End Section

12-1-26-61E-400-028

12-1-26-61E-400-014

12-1-26-61E-400-022

12-1-26-61E-475-001

12-1-26-61E-480-004

12-1-35-61E-200-003

12-1-35-61E-212-016

12-1-35-61E-230-014

12-1-35-61E-200-004

12-1-35-61E-200-005

12-1-35-61E-230-002

12-1-35-61E-235-001

12-1-35-61E-212-001

WOODCREEK CROSSING BLVD

WOODCREEK CROSSING BLVD

MAYAPPLE DR

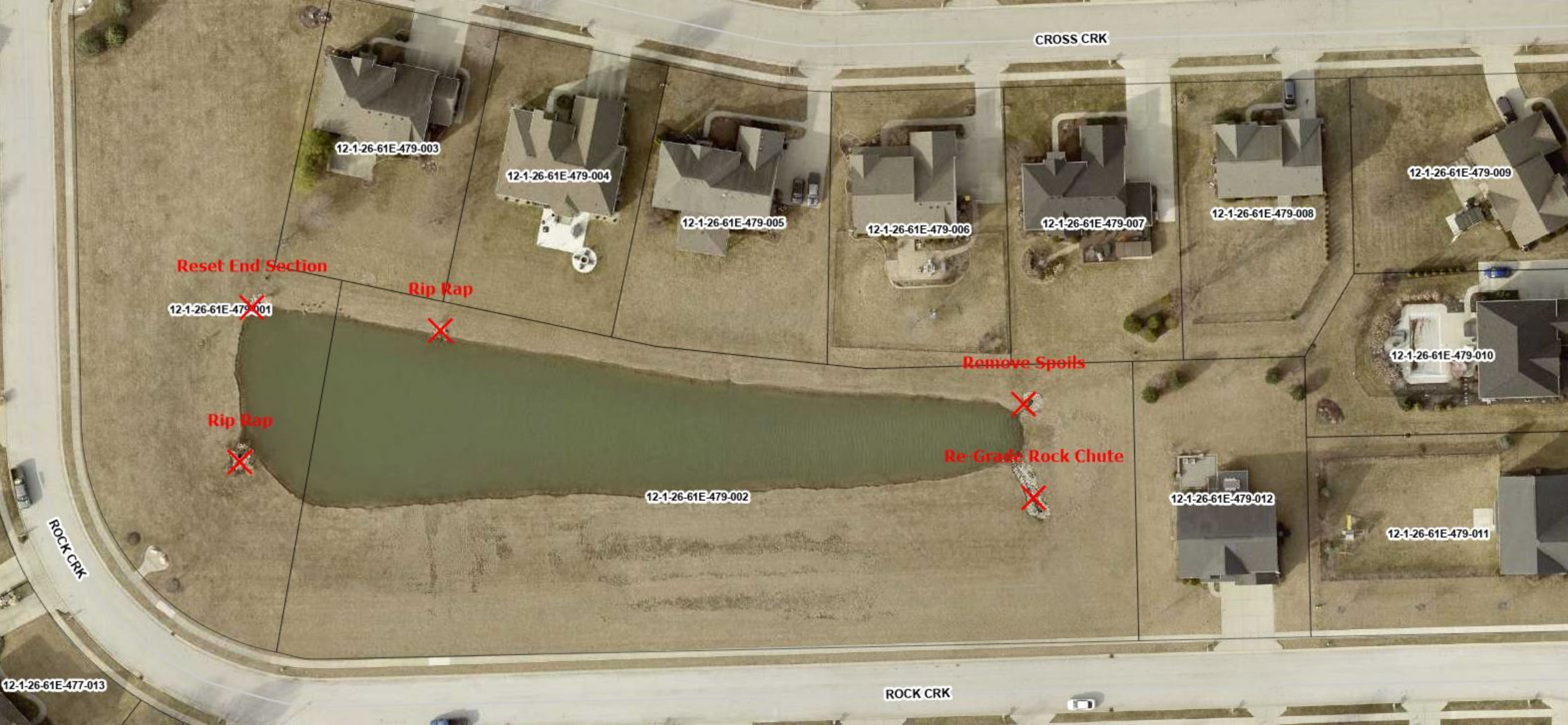
E 200 N

ROCK CRK

ROCK CRK

CHARLES ST









12-1-26-61E-352-004

12-1-26-61E-409-005

12-1-26-61E-410-002

12-1-26-61E-408-013

12-1-26-61E-406-011

12-1-26-61E-400-039

12-1-26-61E-352-005

12-1-26-61E-409-004

12-1-26-61E-409-003

12-1-26-61E-406-013

12-1-26-61E-352-006

12-1-26-61E-409-002

12-1-26-61E-409-001

12-1-26-61E-352-007

12-1-26-61E-375-008

12-1-26-61E-494-001

Remove Trees

Remove Tree

Remove Spoils

12-1-26-61E-491-008

12-1-26-61E-491-001

12-1-26-61E-494-002

12-1-26-61E-482-017

12-1-26-61E-484-017

STONE MANOR CT

12-1-26-61E-491-007

12-1-26-61E-491-002

BANBURY CT

12-1-26-61E-482-016

12-1-26-61E-484-018

12-1-26-61E-375-007

12-1-26-61E-494-003

12-1-26-61E-491-006

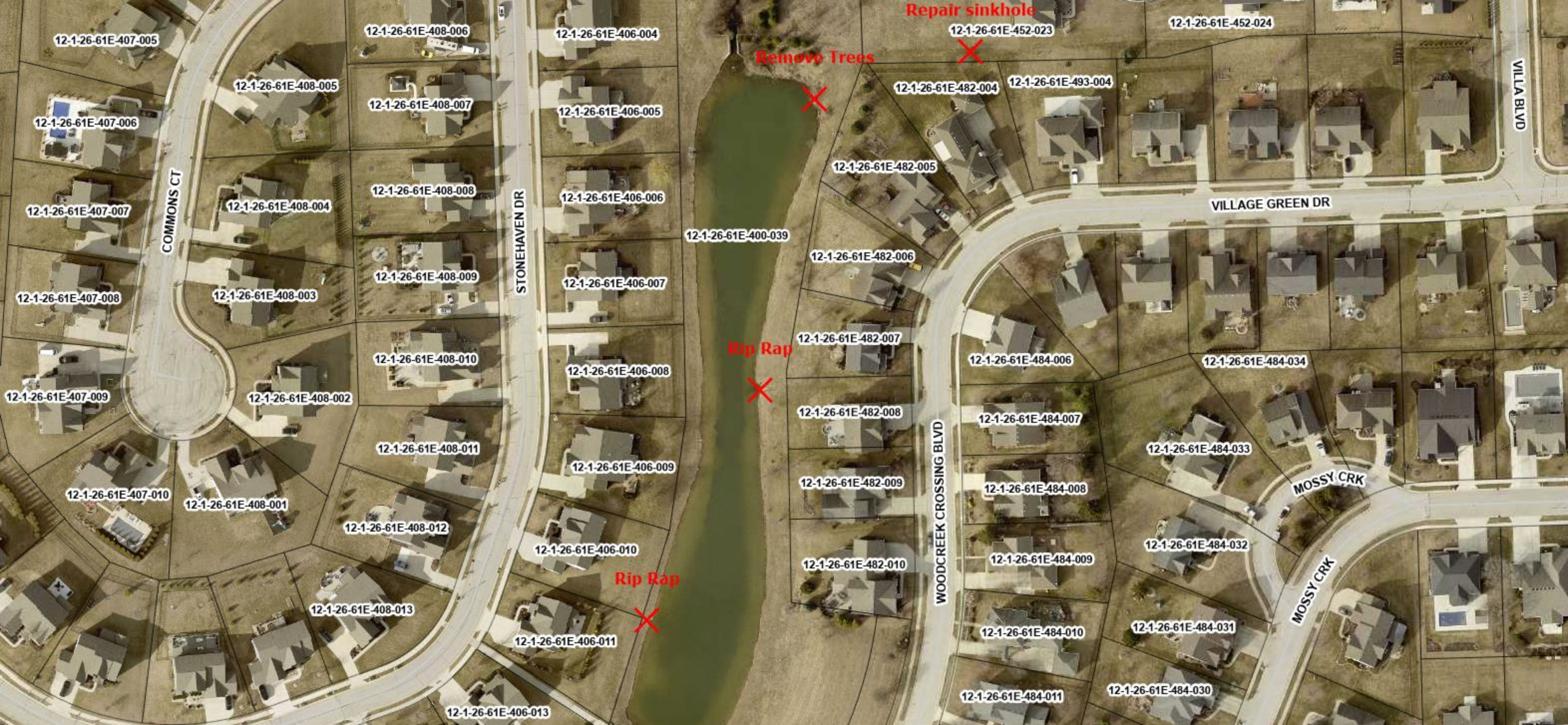
12-1-26-61E-491-003

12-1-26-61E-484-019

12-1-26-61E-484-022

12-1-26-61E-494-004





12-1-26-61E-407-005

12-1-26-61E-408-006

12-1-26-61E-406-004

12-1-26-61E-452-023

12-1-26-61E-452-024

12-1-26-61E-408-005

12-1-26-61E-408-007

12-1-26-61E-406-005

12-1-26-61E-482-004

12-1-26-61E-493-004

12-1-26-61E-407-006

12-1-26-61E-408-004

12-1-26-61E-408-008

12-1-26-61E-406-006

12-1-26-61E-482-005

12-1-26-61E-407-007

12-1-26-61E-408-003

12-1-26-61E-408-009

12-1-26-61E-406-007

12-1-26-61E-482-006

12-1-26-61E-407-008

12-1-26-61E-408-002

12-1-26-61E-408-010

12-1-26-61E-406-008

12-1-26-61E-482-007

12-1-26-61E-407-009

12-1-26-61E-408-011

12-1-26-61E-406-009

12-1-26-61E-482-008

12-1-26-61E-407-010

12-1-26-61E-408-001

12-1-26-61E-408-012

12-1-26-61E-406-010

12-1-26-61E-482-009

12-1-26-61E-484-006

12-1-26-61E-484-034

12-1-26-61E-408-013

12-1-26-61E-406-011

12-1-26-61E-482-010

12-1-26-61E-484-007

12-1-26-61E-484-033

12-1-26-61E-484-008

12-1-26-61E-484-032

12-1-26-61E-484-009

12-1-26-61E-484-031

12-1-26-61E-484-011

12-1-26-61E-484-030

12-1-26-61E-406-013

Remove Trees

Repair sinkhole

Rip Rap

Rip Rap

COMMONS CT

STONEHAVEN DR

WOODCREEK CROSSING BLVD

VILLAGE GREEN DR

VILLA BLVD

MOSSY CRK

MOSSY CRK