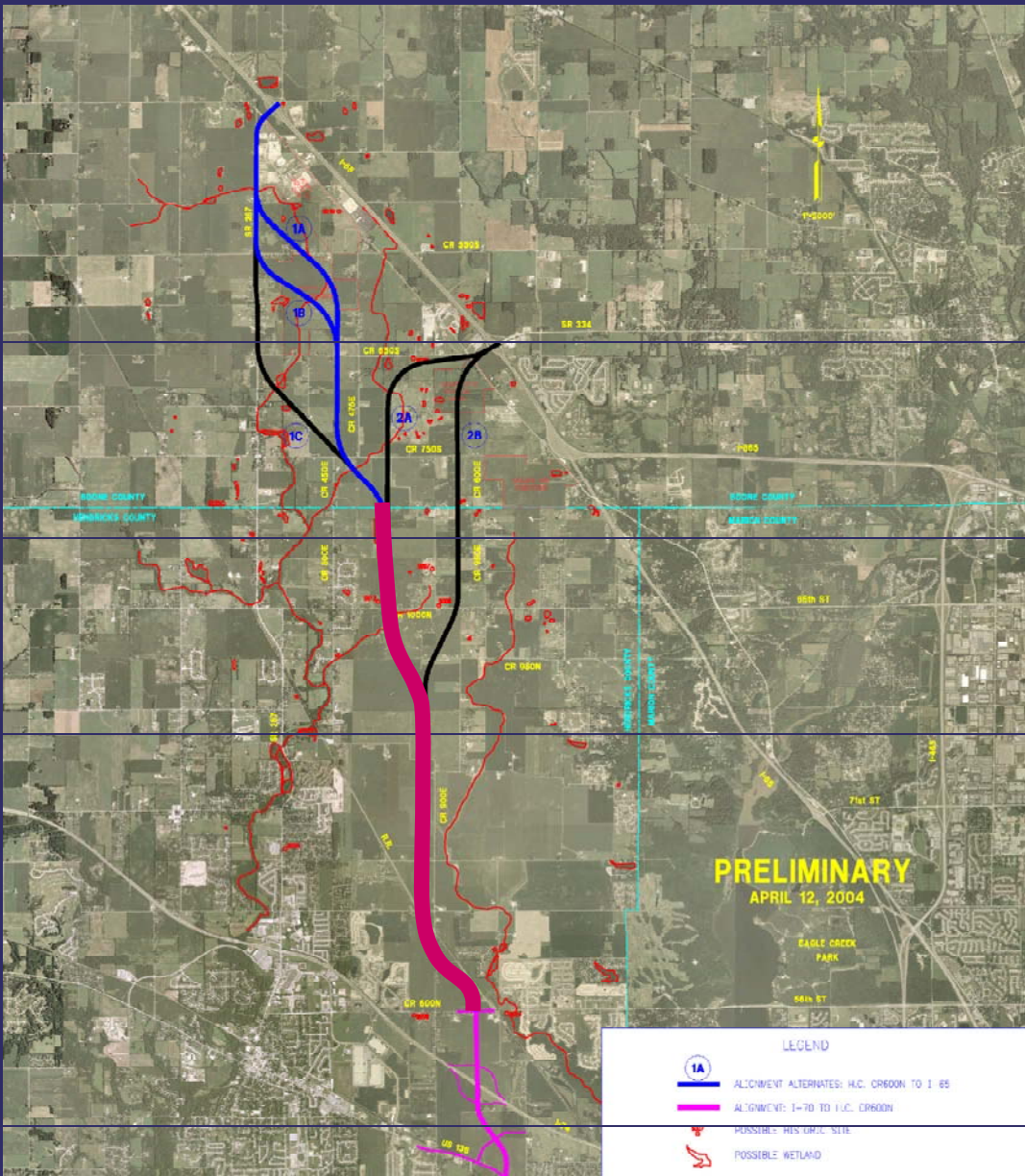



# Future Alignments



- Alignment will likely follow the western option up to the County Line
- Alignment north of the County line is undetermined. Options include connecting into 334 or 267

**Legend:**

 **Proposed Alignment from 56<sup>th</sup> to the County Line**

# RONALD REAGAN Corridor Master Plan

HENDRICKS COUNTY, INDIANA

